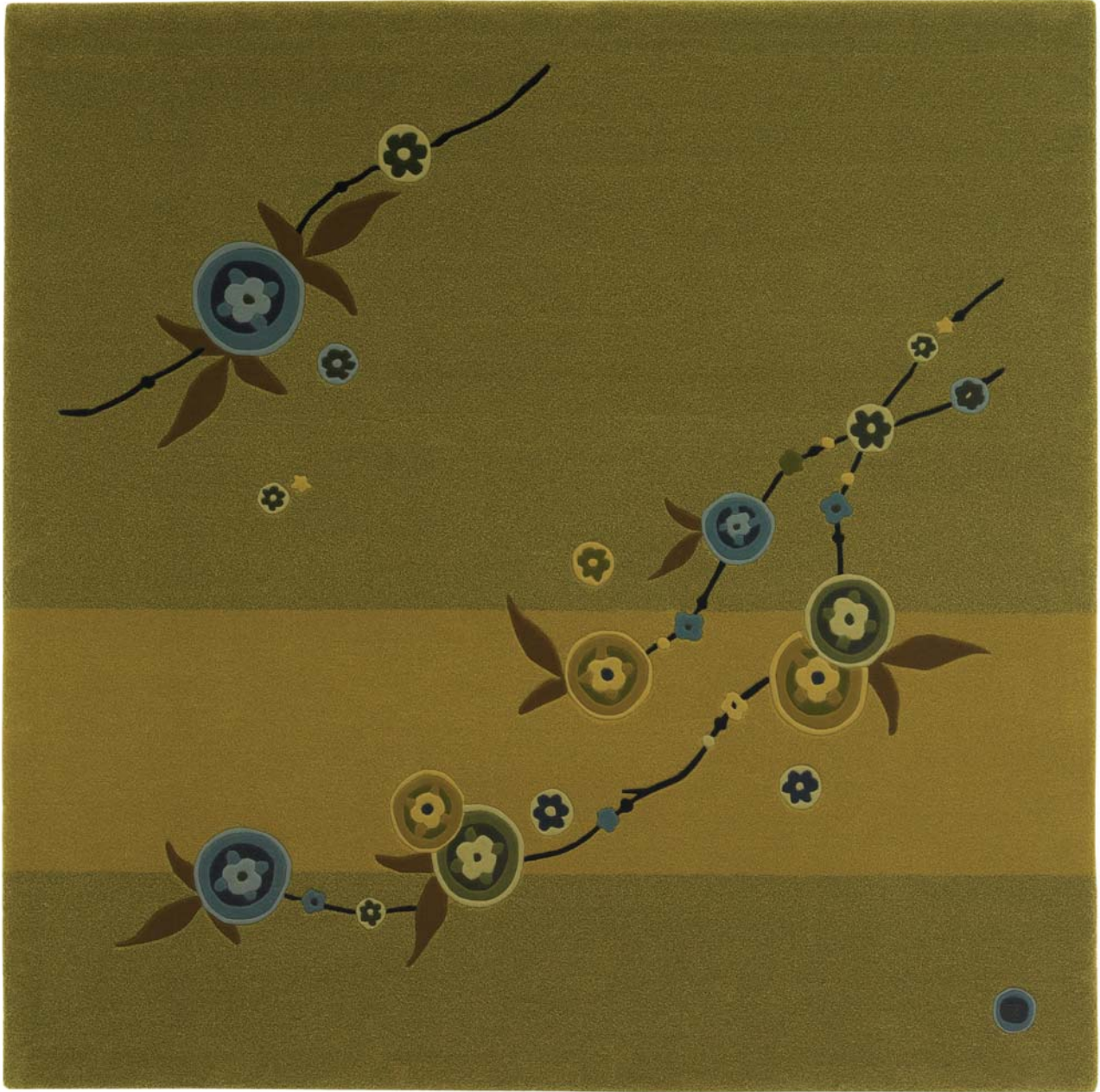
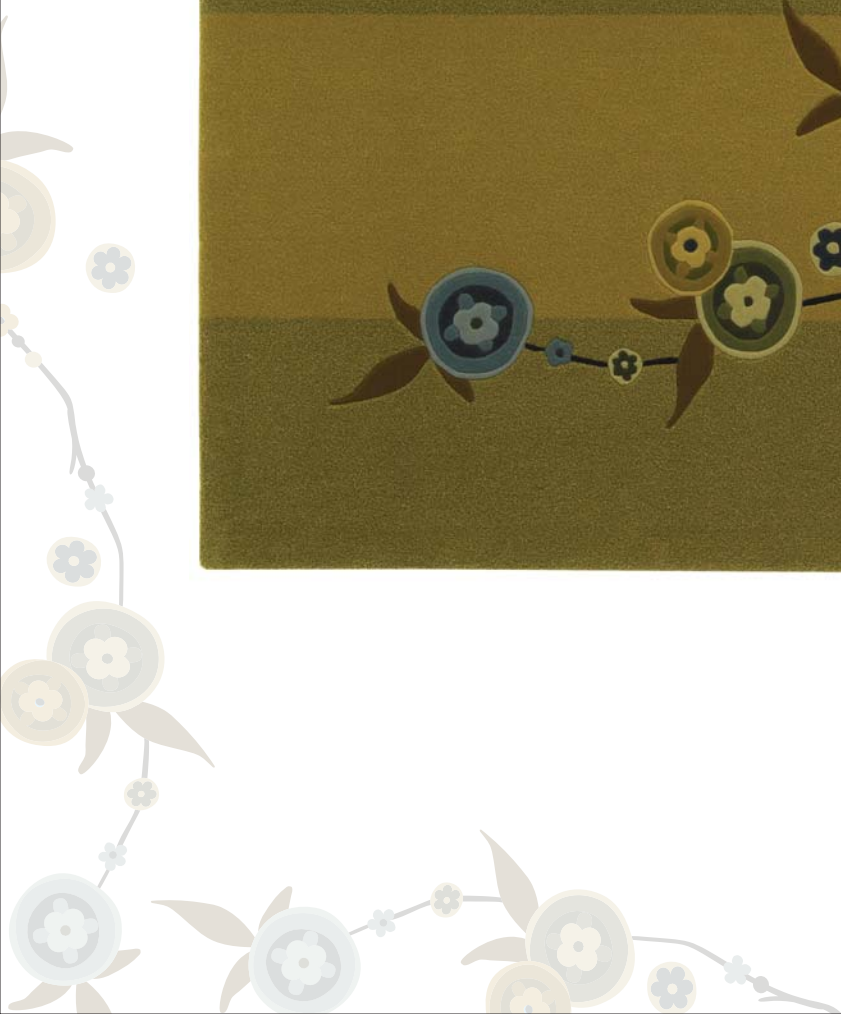


 Blossom

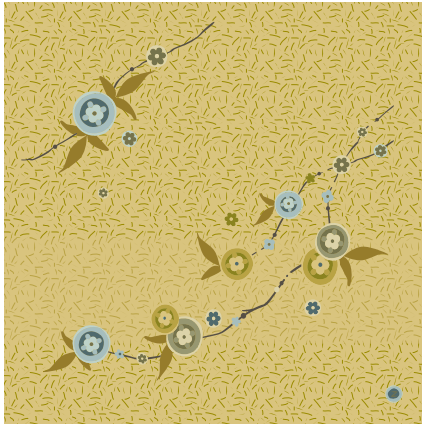


DESIGN: ZUZ DESIGNS



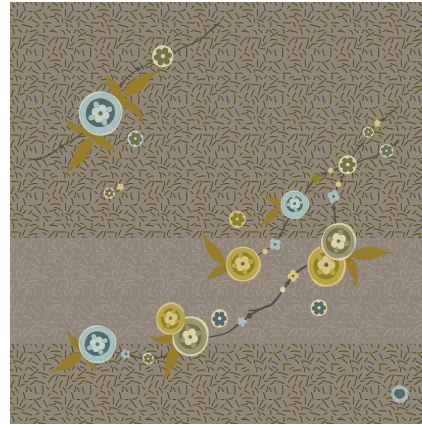
Blossom

DR.197



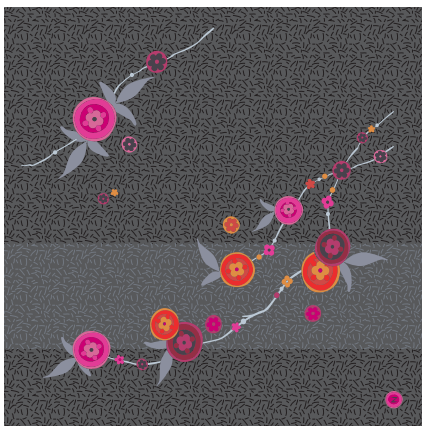
DR.197/MASTER

1. W710 LEMON CELLO
W712 ELECTRIC PEAR
2. W710 LEMON CELLO
W711 CITRON
3. W773 FOSSIL
4. W714 BURNISHED
5. W463 MINT JULIP
6. W464 SEA BREEZE
7. W610 SHETLAND
8. W710 LEMON CELLO
9. W711 CITRON
10. W713 NEW EDEN
11. W715 BUD
12. W717 MACINTOSH
13. W718 CACTUS



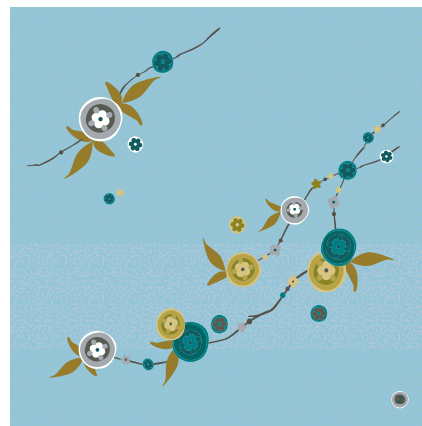
DR.197/1

1. W775 MICA
W651 MUSK
2. W775 MICA
W774 SHALE
3. W773 FOSSIL
4. W714 BURNISHED
5. W463 MINT JULIP
6. W464 SEA BREEZE
7. W610 SHETLAND
8. W710 LEMON CELLO
9. W711 CITRON
10. W713 NEW EDEN
11. W715 BUD
12. W717 MACINTOSH
13. W718 CACTUS



DR.197/2

1. W454 CINDER
W502 BLACK
2. W454 CINDER
W776 STORM CLOUD
3. W737 SKYLIGHT
4. W655 MIRROR
5. W752 GUM DROP
6. W753 SWEET HEART
7. W754 HOT PINK
8. W766 MANGO
9. W759 SUN GLOW
10. W760 BLAZE
11. W762 PORANGE
12. W641 RUBY
13. W632 BORDEAUX



DR.197/3

1. W730 SPAQUA
W481 REEF
2. W730 SPAQUA
W737 SKYLIGHT
3. W773 FOSSIL
4. W714 BURNISHED
5. W700 TALC
6. W777 MARBLE
7. W772 MESQUITE
8. W710 LEMON CELLO
9. W711 CITRON
10. W713 NEW EDEN
11. W483 BRILLIANT TEAL
12. W486 PEACOCK
13. W617 MALLARD

“Blossom” Hand tufted in 100% New Zealand pure wool with cotton backing. Single ply yarn cut pile tufted and tweeded, with hand carving to enhance design, texture and color definition. Spectrum of yarn colors available for custom colorization. Standard size: 7'6" x 7'6"/229 x 229cm, custom sizes available.

Illustrations are only color representations, verify color against wool yarn samples. Color and size may vary due to the nature of hand-made goods. Slight variation is considered common and acceptable. Available only in 5.0 lbs. tufting weight per square yard. Specifications are subject to change without notice.